

CRAIOVA UNIVERSITY OF MEDICINE AND
PHARMACY

**POST-MYOCARDIAL INFARCTION
ARRHYTHMIA RISK
STRATIFICATION USING
MICROVOLT T-WAVE ALTERNANS**

PHD THESIS
- ABSTRACT -

PhD Supervisor:
Prof. Dr. DOINA CÂRSTEA

Candidate:
IONUȚ DONOIU

CRAIOVA
2011

Table of contents

GENERAL CONSIDERATIONS	- 2 -
METHODS.....	- 6 -
RESULTS	- 9 -
CONCLUSIONS.....	- 12 -
REFERENCES.....	- 13 -

GENERAL CONSIDERATIONS

Post-myocardial infarction ventricular arrhythmia and sudden cardiac death risk remain important issues in these patients. In high-risk post-myocardial infarction (MI) patients prophylactic implantable cardioverter defibrillators (ICD) may significantly improve survival. Risk stratification studies of post-MI patients will allow ICD therapy to be applied in a more cost-effective manner.

In case of all sustained arrhythmias, diagnosed or documented by ECG and in certain diseases without any present or past arrhythmic manifestation it is necessary to evaluate the risk of apparition or reoccurrence of a rhythm disturbance especially ventricular tachycardia (VT) or ventricular fibrillation (VF) as potentially lethal events.

Arrhythmia risk evaluation (or, by extension, of vital risk in case of VT/VF) includes, beside the careful reading of standard ECG, a series of useful more or less routine investigations (table 1).

The complexity of these investigations resides not only in their depth (the best example is the type and number of the standard ECG derived parameters) but also the degree of sophistication of the equipment (which implies high costs) as well as the level of professional training of the medical staff.

Most investigations offer data, which to be significant must have a good positive predictive value, but in case of signal averaged electrocardiography (SAECG) and microvolt T-wave alternans (MTWA) the negative predictive value of 97-99% is that of practical importance. The clinical translation of the negative results by the two investigations for the patients with identified cardiac diseases consists in the exclusion of need for further investigations or antiarrhythmic therapeutical interventions.

The reality is not quite as simple, because the arrhythmic risk as assessed at a particular time does not remain at the same level throughout life, but it has a possible variability dependent on many factors, which may or may not be influenced by medical interventions.

Of course arrhythmic risk assessment is not without controversy, but a major part is placed under the dominance of practice guidelines that cover statistics and major evidence in the light of the majority of situations in practice.

Table 1. Useful investigations for the evaluation of arrhythmic risk

1. Standard ECG
 2. Stress ECG, looking for:
 - effort induced arrhythmias
 - premature beats (behavior in certain effort stages)
 - QT interval (adaptation to heart rate)
 - Heart rate adaptation to effort (maximum value, return to normal rhythm)
 3. Bedside ECG
 4. Ambulatory ECG monitoring (Holter), analyzing:
 - eventual sustained or unsustained arrhythmias
 - number of PVB
 - heart rate variability
 - heart rhythm turbulence
 - QT variability
 5. Long term monitoring with implantable devices
 6. Signal averaged ECG (High resolution ECG or SAECG - signal averaged electrocardiography)
 - applied to the P wave
 - applied to the QRS complex
 7. Evaluation of T wave alternans (or MTWA - microvolt T wave alternans)
 8. Evaluation of the baroreceptor reflex sensitivity
 9. Electrophysiological exploration (with programmed stimulation)
-

Microvolt T-Wave Alternans – MTWA

Microvolt-level electrical alternans of the T-wave (MTWA) was first reported in 1981 in a series of papers by Adam, Cohen and co-authors. The papers reported the presence of microvolt-level alternation in T-wave amplitude during atrial pacing in animals following interventions that increased susceptibility to ventricular arrhythmias. In 1988, Smith et al. reported on a Spectral Method for detecting microvolt-level alternans that is sensitive to any morphological pattern of alternation in the T-wave. Smith et al. used this technique to demonstrate a relationship between MTWA and ventricular fibrillation threshold in animal studies. Smith et al. also reported a statistically significant association of electrical alternans with inducibility of sustained ventricular tachycardia in 19 patients undergoing electrophysiology testing.

In 1994, in a study of 83 patients, Rosenbaum et al. demonstrated a highly significant relationship between electrical alternans measured during atrial pacing, and inducibility of sustained ventricular tachycardia (VT) or ventricular fibrillation (VF). The same study also showed strong correlation between MTWA and 20-month arrhythmia-free survival.

In 1997, Hohnloser et al. demonstrated that MTWA can be reliably assessed during non-invasive exercise stress. The study showed 84% concordance of the presence of MTWA both during exercise and atrial pacing in 30 patients. Also in 1997, Klingenhoben et al. presented evidence relating MTWA and arrhythmia recurrence in 65 patients with an implantable cardioverter defibrillator (ICD). All patients underwent invasive electrophysiology study (EPS) and non-invasive risk stratification including microvolt T-wave alternans. T-wave alternans was a significant predictor of appropriate ICD firings with a sensitivity of 80% and positive predictive value of 50%. In this study, T-wave alternans was superior to EPS in predicting recurrent VT/VF. In a third study, Caref et al. demonstrated that alternans is rare in normal control subjects, age-matched to typical VT/VF patients. Fewer than 2% of patients were MTWA positive with onset below 70% of maximum predicted heart rate in a group of 79 healthy controls.

In a multi-center clinical study consisting of 337 consecutive patients referred for electrophysiology (EP) study, microvolt T-wave alternans (MTWA) was measured during submaximal bicycle exercise. Actuarial arrhythmia-free survival of MTWA+ was 0.8117 and

of MTWA- was 0.9828 (Risk Ratio 10.9; [p=0.002]). Actuarial arrhythmia-free survival of EP+ was 0.7643 and of EP- was 0.9667 (Risk Ratio 7.07; [p<0.001]).

The ability of MTWA to predict the induction of sustained monomorphic VT during programmed stimulation was determined in a subset of 140 patients. MTWA predicted EP outcome with a sensitivity of 76% and specificity of 65% (p<0.0001).

Microvolt T-wave alternans testing is useful in the prediction of ventricular tachyarrhythmic events; however, there are significant limitations to its use. The predictive value of MTWA varies significantly depending on the disease substrate. The incremental prognostic value of MTWA when used with other methods of risk stratification is unclear.

METHODS

This prospective study enrolled 120 patients (74 men, 46 women, mean age 62.3 ± 15.2 years in men, and 64.2 ± 13.8 years in women) with a history of myocardial infarction but no prior sustained ventricular arrhythmias.

Inclusion criteria were:

- Male or female, aged 18 years or more at inclusion;
- History of myocardial infarction (based on the clinical course, serum marker activity and on electrocardiogram) – at least one month ago;
- In sinus rhythm;
- In stable condition (for at least one month) with regards to symptoms (angina) and on appropriate and stable doses (for at least one month) of conventional cardiovascular medications.

Non-inclusion criteria were:

- Unlikely to cooperate in the study;
- Legal incapacity or limited legal incapacity;
- Class III-IV NYHA chronic heart failure;
- Patient unable to complete a stress test or with contraindication for atrial pacing.

Written informed consent was obtained from each patient at the screening visit; then each participant underwent a screening interview. Based on it, subjects were declared eligible to proceed if all inclusion criteria were fulfilled and no exclusion criteria were met.

Patient assessment

Echocardiography

Left ventricular ejection fraction (LVEF) was assessed by modified Simpson rule on echocardiography (HP Sonos 5500, 2.5-4 MHz transducer, with simultaneous ECG monitoring).

Holter

Ambulatory 24 hour ECG recordings were obtained using a commercial device (Zymed). We analyzed the presence of sustained or unsustained ventricular arrhythmia, and heart rate variability in the time domain (SDNN, SDANN5, RMSSD).

SAECG

Signal averaged ECGs were recorded with General Electric MAC 5500; target noise level was $< 0.7 \mu\text{V}$. Late ventricular potentials were considered to be present if filtered QRS duration $> 114 \text{ ms}$, HFLA $> 38 \text{ ms}$, and RMS40 $< 20 \mu\text{V}$.

MTWA testing

Microvolt T wave alternans test was performed using a HearTwave II system (Cambridge Heart, Inc.) during bicycle exercise or during atrial pacing. In order to minimize the noise, skin preparation and high resolution electrodes were used. Electrocardiographic leads were placed at standard 12-lead positions and in orthogonal X, Y, Z configuration.

The MTWA test was interpreted as positive, negative or indeterminate:

- Positive: A test is positive if it has sustained alternans with an Onset Heart Rate ≤ 110 bpm (or has sustained alternans at the resting heart rate).
- Negative: A test is negative if it does not have sustained alternans with an Onset HR ≤ 110 bpm and the Maximum Negative HR is ≥ 105 bpm.
- Indeterminate: A test is indeterminate if it does not have an Onset HR ≤ 110 bpm or a Maximum Negative HR ≥ 105 bpm.

Sustained alternans is defined as alternans that is consistently present over a patient-specific heart rate threshold (except for gaps believed to be caused by obscuring factors such as ectopics, noise or HR dips).

- With at least 1 minute of $V_{\text{alt}} \geq 1.9 \mu\text{V}$ and alternans ratio ≥ 3 .
- In any of leads VM, X, Y, Z or in 2 adjacent precordial leads.
- With some period of artifact-free data (defined below and indicated on alternans trends by a black line on the time axis).

Electrophysiological study

After local anesthesia using lidocaine 1%, one electrode catheter was inserted percutaneously through the subclavian vein and advanced to the high lateral right atrium, across the tricuspid valve, and to the right apex in all patients.

Programmed ventricular stimulation was performed using stimulus duration of 2-ms at amplitude of two to three times the diastolic threshold, with up to three extrastimuli at basic drive cycle lengths, 600 ms and 400 ms respectively, starting at apex, then at outflow tract. Coupling intervals of extrastimuli were decreased in 10-ms interval until coupling interval of 180 ms was reached or refractoriness of all extrastimuli was reached.

The endpoint was the induction of sustained ventricular tachycardia (> 30 s in duration or associated with hemodynamic compromise requiring earlier intervention) or the completion of stimulation protocol. The induction of ventricular fibrillation was defined as an indeterminate result.

Follow-up

All patients were followed for an average of 14 months. Clinical follow-up was obtained as regular interval. Arrhythmic events during follow-up were defined as:

1. Sustained ventricular tachycardia or ventricular fibrillation;
2. Documented appropriate ICD therapy for ventricular tachyarrhythmia;
3. Sudden cardiac death.

RESULTS

Microvolt T-wave alternans was determined during bicycle stress test in 71 patients (59%) and during atrial pacing in 34 patients (28%). In 15 patients (13%) we used both techniques, executed in consecutive days, in order to compare the results. In these 15 patients the results were similar. In 2 cases MTWA was indeterminate at bicycle test and positive at atrial pacing.

MTWA was positive in 34 patients (28%), negative in 70 patients (58%), and indeterminate in 22 patients (14%).

EPS was performed in 19 patients; it was positive in 5 patients, negative in 12 patients, and indeterminate in 2.

Predictors of EPS result were: male sex, echocardiography LVEF, 24 hour heart rate variability, late ventricular potentials, and MTWA (table 1).

Table 1. Predictors of EP study result

	EPS + (5 p)	EPS – (12 p)	p
Age (years)	59.2 ± 12.3	61.3 ± 11.7	0.3
Male sex (%)	80	70.5	0.04
LVEF (%)	38.2 ± 13.6	41.4 ± 12.8	0.003
SDNN (ms)	84 ± 18	112 ± 23	0.004
SDANN5 (ms)	91 ± 23	102 ± 27	0.05
RMSSD	32 ± 13	54 ± 21	0.05
Holter NSVT (%)	60	41	0.2
LVP + (%)	100	94	0.3
MTWA + (%)	60	0,9	<0.0001

The positive predictive value of MTWA for inducible arrhythmia at EPS was 75%, negative predictive value was 88.8%, specificity – 94.1%, and sensitivity – 60%.

SAECG was less sensitive but more specific in predicting the result of EP study, suggesting that these tests could be used in combination. To verify this hypothesis we compared the results for each combination of results (table 2). Patients with both test positive had the highest probability for inducible arrhythmia (hazard ratio = 6.2, p = 0.001). In patients with both tests negative sensitivity and NPV were low. Discordant combinations were less predictive.

Table 2.

	Sensitivity	Specificity	PPV	NPV	RR	p
MTWA	60%	94%	75%	88%	5.2	<0.001
SAECG	55%	96%	48%	88%	3.9	<0.001
MTWA+ SAECG+	51%	97%	77%	91%	6.2	<0.001
MTWA+ SAECG-	29%	75%	24%	79%	1.5	0.4
MTWA- SAECG+	8%	85%	13%	78%	0.4	0.6
MTWA- SAECG-	15%	42%	7%	68%	0.2	<0.001

During follow-up in 11 patients (9.16%) arrhythmic events, as defined earlier, were recorded. Mortality was 4.16% (5 patients). End-point incidence was 11.66%, with an annual rate of 9.99%.

The table below presents the predictors of ventricular arrhythmia and sudden cardiac death.

Table 3. Arrhythmia and SCD predictors

	+ (16 p)	- (104 p)	p
Age (years)	62.4 ± 14.1	63.7 ± 12.7	0.07
Male sex (%)	81.25	58.65	0.03
LVEF (%)	39.3 ± 11.6	43.8 ± 12.4	0.003
SDNN (ms)	82 ± 22	119 ± 25	0.001
SDANN5 (ms)	85 ± 31	110 ± 26	0.04
RMSSD	36 ± 18	58 ± 26	0.05
Holter NSVT (%)	18.75	7.69	0.05
LVP + (%)	37.5	29.8	0.3
MTWA + (%)	87.5	19.23	<0.0001
EPS + (%)	25	0.96	<0.0001

To identify the independent predictors for clinical events, we performed a multivariate analysis. The composite end-point was ventricular arrhythmia and sudden cardiac death.

Left ventricular ejection fraction (hazard ratio = 3.5, $p = 0.002$), MTWA (hazard ratio = 11.2) and EPS (hazard ratio = 3.1) – $\chi^2 = 19.6$ ($p < 0.0001$) were predictors of ventricular arrhythmia and sudden cardiac death. A Cox regression analysis that included only non-invasive tests showed that MTWA was the only independent predictor (hazard ratio = 10.2, $\chi^2 = 15.5$, $p < 0.0001$).

CONCLUSIONS

- Our study demonstrates that microvolt TWA can be used for arrhythmia risk stratification after myocardial infarction, having a good negative predictive value.
- The positive predictive value of MTWA could be improved when the test is combined with other noninvasive markers, specifically ventricular late potentials. We consider that in patients with positive MTWA further evaluation, including electrophysiological study with programmed ventricular stimulation is needed.
- We propose the following algorithm for post-myocardial infarction arrhythmia risk stratification (figure 1).

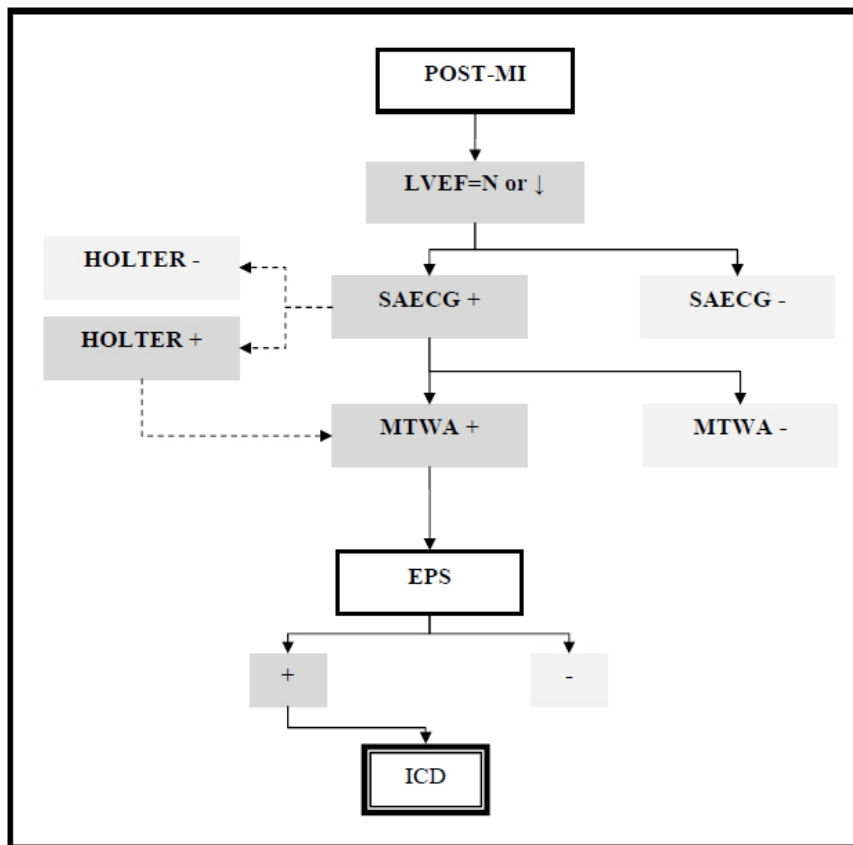


Figure 1.

REFERENCES

1. American Heart Association. Heart Disease and Stroke Statistics - 2004 Update. Dallas, Tex.: American Heart Association; 2003.
2. Braunwald E, Libby P, Bonow RO, Mann DL, Zipes DP, eds. Braunwald's Heart Disease: A Textbook of Cardiovascular Medicine. 8th ed. Philadelphia, PA: Saunders Elsevier; 2008.
3. Ionuț Donoiu, Dan-Dominic Ionescu. Tulburări de ritm și de conducere, în Cardiologie vol. II, Rodica Mușetescu, Dan-Dominic Ionescu, ed.; pp.9-55; Editura Medicală Universitară Craiova, 2010.
4. Topol E, Nissen S. Cardiovascular Medicine: enhanced multimedia CD-ROM, version 2. Lippincott, Williams & Wilkins, 2000.
5. Nuss HB, Kääh S, Kass DA et al. Cellular basis of ventricular arrhythmias and abnormal automaticity in heart failure. *Am J Physiol Heart Circ Physiol*, 1999; 277: H80-H91.
6. Ionescu DD. Evaluarea riscului aritmic și de moarte subită, în Progrese în cardiologie, Gherasim L (ed.). Editura Infomedica, 2002; pp 285-334.
7. Zipes DP, Camm AJ, Borggrefe M, Buxton AE, Chaitman B, Fromer M, Gregoratos G, Klein G, Moss AJ, Myerburg RJ, Priori SG, Quinones MA, Roden DM, Silka MJ, Tracy C. ACC/AHA/ESC 2006 guidelines for management of patients with ventricular arrhythmias and the prevention of sudden cardiac death: a report of the American College of Cardiology/American Heart Association Task Force and the European Society of Cardiology Committee for Practice Guidelines (Writing Committee to Develop Guidelines for Management of Patients With Ventricular Arrhythmias and the Prevention of Sudden Cardiac Death). *J Am Coll Cardiol* 2006;48:e247– e346.
8. Priori SG, Aliot E, Blomstrom-Lundqvist C, et al. Task Force on Sudden Cardiac Death of the European Society of Cardiology. *Eur Heart J*, 2001; 22: 1374-1450.

-
9. Cheitlin MD, Alpert JS, Armstrong WF, et al. ACC/AHA guidelines for the Clinical Application of Echocardiography: a report of the American College of Cardiology/American Heart Association Task Force on Practice Guidelines (Committee on Clinical Application of Echocardiography). Developed in collaboration with the American Society of Echocardiography *Circulation* 1997; 95: 1686-1744.
 10. Cheitlin MD, Armstrong WF, Aurigemma GP, et al. ACC/AHA/ASE 2003 guideline update for the clinical application of echocardiography—summary article. A report of the American College of Cardiology/American Heart Association Task Force on Practice Guidelines (ACC/AHA/ASE Committee to Update the 1997 Guidelines for the Clinical Application of Echocardiography). *J Am Coll Cardiol* 2003; 42: 954-970.
 11. Myerburg RJ, Kessler KM, Castellanos A. Sudden cardiac death. Structure, function, and time-dependence of risk. *Circulation* 1992; 85: 12–10.
 12. Malik Marek. Risk of arrhythmia and sudden death, BMJ Books, 2001; pg. 287-293.
 13. Breihardt G, Cain ME, El-Sherif M., Flowers NC et al. Standards for analysis of ventricular late potentials using high resolution or signal averaged electrocardiography: o statement by a task Force Committee of the European Society of Cardiology, the American Heast Associationand the American College of Cardiology, *J Am. Coll. Cardiol* 1991; 17: 999-1006.
 14. Cain ME. Signal – averaged electrocardiography, ACC Expert Consensus Document. *J. American College Cardiology* 1996; 27: 238-249.
 15. Berbari EJ, Heinberg JS. A practical guide to the use of the high resolution electrocardiogram. Futura Publishing Company, 2000.
 16. Gomes JA (ed) – Signal averaged electrocardiography. Kluwer Academic Publiser, Dordrecht, Germany, 1993.
 17. Zareba W, Noison-Blandes P, Locate E. Noninvasive Electrocardiology in Clinical Practice, Futura Publishing Company, 2001.
 18. Rosenbaum DS, Jackson LE, Smith JM, Garan H, Ruskin JN, Cohen RJ. Electrical alternans and vulnerability to ventricular arrhythmias. *N Engl J Med* 1994; 330: 235–241.

-
19. Adam DR, Akselrod S, Cohen RJ. Estimation of ventricular vulnerability to fibrillation through T-wave time series analysis. *Comp in Card* 1981; 307-310.
 20. Adam DR, Powell AO, Gordon H, Cohen RJ. Ventricular fibrillation and fluctuations in the magnitude of the repolarization vector. *Comp in Card* 1982: 241-244.
 21. Adam DR, Smith JM, Akselrod S, Nyberg S, Powell AO, Cohen RJ. Fluctuations in T-wave morphology and susceptibility to ventricular fibrillation. *J Electrocard* 1984; 17: 209-218.
 22. Hohnloser SH, Klingenheben T, Zabel M, Li YG, Albrecht P, Cohen RJ. T-wave alternans during exercise and atrial pacing in humans. *J Cardiovasc Electrophysiol* 1997; 8-9: 987-993.
 23. Klingenheben T, Zabel M, Peetermans J, Cohen RJ, Hohnloser SH. Assessment of T-wave alternans for prediction of recurrent ventricular tachycardia/fibrillation in patients with an implantable cardioverter/defibrillator. American Heart Association, 1997. Abstract #4010.
 24. Caref EB, Stoyanovsky V, Cohen RJ, El-Sherif N. Incidence of T-wave alternans in normal subjects, and effect of heart rate on onset. American Heart Association, 1997. Abstract #3256.
 25. Zabel M, Siedow A, Klingenheben T, Gronefeld G, Cohen RJ, Hohnloser SH. Noninvasive Risk Stratification in Patients with Congestive Heart Failure: Comparison of Traditional Risk Markers and T Wave Alternans. *J Am Coll Cardiol* 1997; 29/2: 1091-98.
 26. Ikeda T, Saito H, Tanno K, et al. T-Wave Alternans as a Predictor for Sudden Cardiac Death After Myocardial Infarction. *Am J Cardiol* 2002; 89: 79-82.
 27. Hohnloser SH, Klingenheben T, Yi-Gang L, Zabel M, Peetermans J, Cohen RJ. T-wave alternans as a Predictor of Recurrent Ventricular Tachyarrhythmias in ICD Recipients: Prospective Comparison with Conventional Risk Markers. *J Cardiovasc Electrophysiol* 1998; 9: 1258-1268.
 28. Ikeda T, Takami M, Kondo N, Tezuka N, Nakae T, Mahito N, Enjoji Y, Abe Ryoji, Sugi K, Yamaguchi T. Combined assessment of T-wave alternans and late potentials used to predict arrhythmic events after myocardial infarction. *J Am Coll Cardiol* 2000; 35: 722-30.

-
29. Gold MR, Bloomfield DM, Anderson KP, et al. A Comparison of T-wave alternans, Signal Averaged Electrocardiography and Programmed Ventricular Stimulation For Arrhythmia Risk Stratification. *J Am Coll Cardiol*, 2000; 36: 2247-53.
 30. Ikeda T, et al. Combined assessment of T wave alternans and late potentials used to predict arrhythmic events after myocardial infarction. A prospective study. *J Am Coll Cardiol* 2000; 35: 722–730.
 31. Ikeda T, et al. T-wave alternans as a predictor for sudden cardiac death after myocardial infarction. *Am J Cardiol* 2002; 89: 79–82.
 32. Hohnloser SH, et al. T-wave alternans negative coronary patients with low ejection and benefit from defibrillator implantation. *Lancet* 2003; 362: 125–126.
 33. Chow T, et al. Microvolt T-wave alternans identifies MADIT II type patients at low risk of ventricular tachyarrhythmic events. [abstract] *Circulation* 2004; IV: 323.
 34. Gehi AK, Stein RH, Metz LD, et al. Microvolt T-Wave Alternans for the Risk Stratification of Ventricular Tachyarrhythmic Events. A Meta-Analysis, *J Am Coll Cardiol*; 2005; 46: 75-82.
 35. Ikeda T, Yoshino H, Sugi K, Tanno K, Shimizu H, Watanabe J, Kasamaki Y, Yoshida A, Kato T. Predictive value of microvolt T-wave alternans for sudden cardiac death in patients with preserved cardiac function after acute myocardial infarction: results of a collaborative cohort study. *J Am Coll Cardiol*. 2006; 48(11): 2268-74.
 36. Adachi K, Ohnishi Y, Yokoyama M. Risk stratification for sudden cardiac death in dilated cardiomyopathy using microvolt-level T-wave alternans. *Jpn Circ J* 2001; 65: 76-80.
 37. Kitamura H, Ohnishi Y, Okajima K, et al. Onset heart rate of microvolt-level T-wave alternans provides clinical and prognostic value in nonischemic dilated cardiomyopathy. *J Am Coll Cardiol* 2002; 39: 295-300.